



## WEEKLY PARENT BULLETIN NO 14 – WEEK B

Week Commencing 11 <sup>th</sup> December 2023	
Monday 11 <sup>th</sup> December	Year 11 Assembly - GLOSCOL Year 11 Christmas Lunch
Tuesday 12 <sup>th</sup> December	6.00 – 8.00 p.m. Christmas Showcase
Wednesday 13 <sup>th</sup> December	Year 10 Christmas Lunch
Thursday 14 <sup>th</sup> December	Year 9 Christmas Lunch Year 10 Labour Market Information with GROWS Year 11 Reports to Parents 2.40 p.m. – 3.15 p.m. Year 11 Mock Assembly 4.45 p.m. – 8.00 p.m. Year 11 Parents Evening
Friday 15 <sup>th</sup> December	

We've been starting to feel festive this week with Year 7 and 8 having their Christmas dinners. It has become an annual tradition, and it has been so lovely see staff sitting to have lunch with students. I want to say a huge thank you to our in-school catering team lead by Mrs N Harris who have done a fabulous job of feeding us all this week, thank you!

You also may be aware that we had a lockdown drill on Wednesday. We had communicated with students and staff fully in advance, so they knew what to expect and it was reassuring to see how quickly the school was secured and how mature and sensible students were.

We've got a busy week to look forward to and a few dates to share.

On Tuesday next week we are holding our annual Christmas Showcase. Student musicians and actors will be performing in front of students, parents and guests and it is set to be a great night. If you have yet to do so you can book tickets through parent pay – we'd love for our performers to be in front of a sell-out crowd!

On Thursday afternoon our Year 11 cohort will be given their Mock exam results as part of an assembly, and this will run into the evening when parents will be meeting with parents to discuss progress and achievements.

Finally – looking forward to the end of term on Friday 22<sup>nd</sup> December when we will have an end of term Christmas celebration assembly and we will be recognising stand out performers across the term. We'd like to invite students and staff to wear a Christmas jumper on that day, over their normal uniform. Term will end at 1230 on that day.

Richard Brand  
Headteacher

[@thedeanacademyofficial](#)



[@thedeanacademyofficial](#)



[@TheDeanAcademy](#)





## DATES FOR YOUR DIARY

Friday 22 <sup>nd</sup> December 2023	Term 2 ends at 12.30 p.m.
Monday 8 <sup>th</sup> January 2024	Term 3 starts for all students
Thursday 25 <sup>th</sup> January 2024	Year 8 Parents' Evening
Friday 26 <sup>th</sup> January 2024	Inset Day

ENJOYMENT

ACHIEVEMENT

COMMUNITY

Congratulations to the following weekly winners of our attendance raffle week ending 1<sup>st</sup> December 2023:

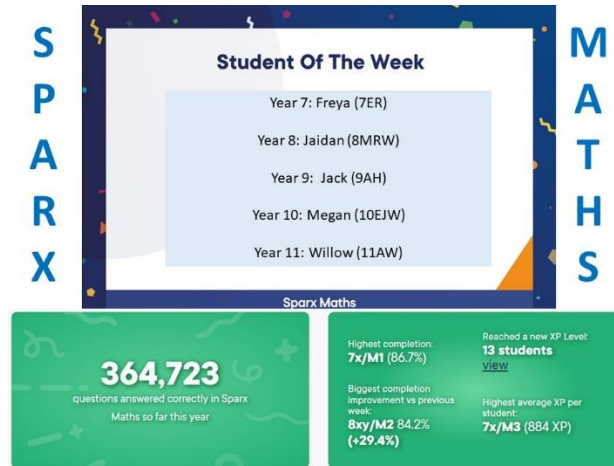
KS3 – Brooke H, Year 7

KS4 – Josh M, Year 10

## BRIGHT SPOTS

Well done to Ava S, Amber S, Alexia-Sienna H, Abigail-Grace P in Year 8 who have been making bracelets to raise money for charity and had a stall at the Christmas Light switch on event in Lydney on Friday.





## WRITER OF THE WEEK

This weeks 'Writer of the Week' is Islamiat O in Year 11. She has written for the Black History Month Poetry competition titled:

### Saluting our Sisters

Dr. Shirley Jackson. An exemplary pioneer creating new heights for young black women. Shirley not only motivates but empowers black women with her knowledge. Shirley conducted scientific research that enabled others to invent iPhones today.

Black women are not only beautiful but also brainy.

Lisa Gelobter. You watch Hulu so much but Lisa launched it. A phenomenal woman with brilliant ideas such as Shockwave and Active X. NO to discrimination, she uses the platform the Quitable to fight discrimination in the workplace.

Black women are not only beautiful but also brainy.

Valerie Thomas. A gem born in Baltimore that impacted NASA. We can see space on earth but we don't know how. The astounding mirror called the illusion transmitter opens our eyes. This helps us see a bigger, better world.

Black women are not only beautiful but also brainy.

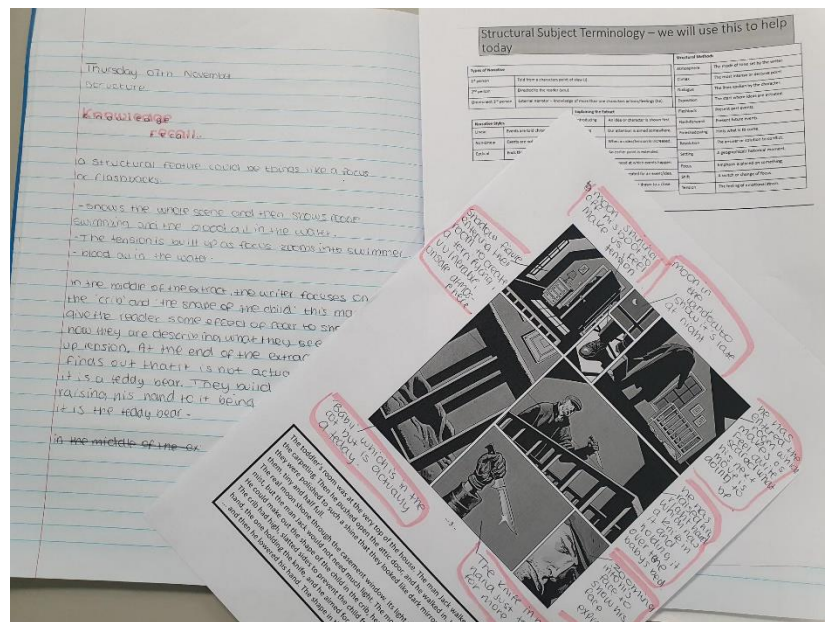
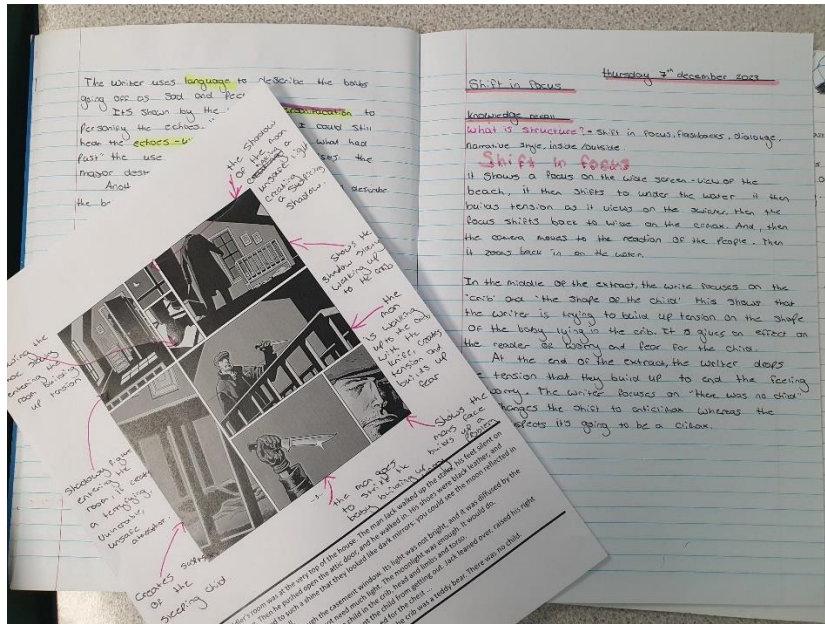
Amanda Spann. An intelligent magnate. She uses knowledge and resources to empower you high-flyers to achieve greatness. She educates you on how to build an app, like growing a tree from a seed anywhere around the globe.

Black women are not only beautiful but also brainy.



# ENGLISH

Megan K and Bailey W, in Year 10 have been working on structural features.





## POETRY

Year 7

he stain  
I come from a migrated family.  
I come from a home tearing apart.  
I come from a broken mind.  
But I keep going.  
I come from a distant country  
far from this  
I come from a tradition not to distort  
to Christmas  
I come from a family better than I am  
I come from a sexuality distant to yours  
I come from a fire not lit.  
I come from a void deep in my mind.  
I come from a ~~street~~ ~~affable~~ state  
close to the top of America.

Bryn H

I come from  
I come from  
I come from ink and paper  
I come from forever essence  
I come from never spoken words and the sadness of speech  
I come from nightmares not waking into a dream  
I come from real hearts and foolish feelings  
I come from salty tears and a more bitter taste  
I come from a silent prayer and a washed name  
I come from love but never saying I love you  
I come from questions and unanswered questions  
I come from the wish for and something else brighter than  
I come from sleepless nights and night-time joys  
I come from god's love but without wishes  
I come from darkness but sleeping my own life  
I come from fear made by others and other's fear  
I come from deep problems and unspoken solutions  
I come from creating friends, who do which, I do question  
I come from pen and paper, paint and ink  
I come from imagination  
I come from a forever sadness existing at my core  
I come from hope to keep on going  
I come from making a love to wonder  
I come from the fear of speaking words but writing them on paper  
I come from endless dreams and a sea of nightmares.

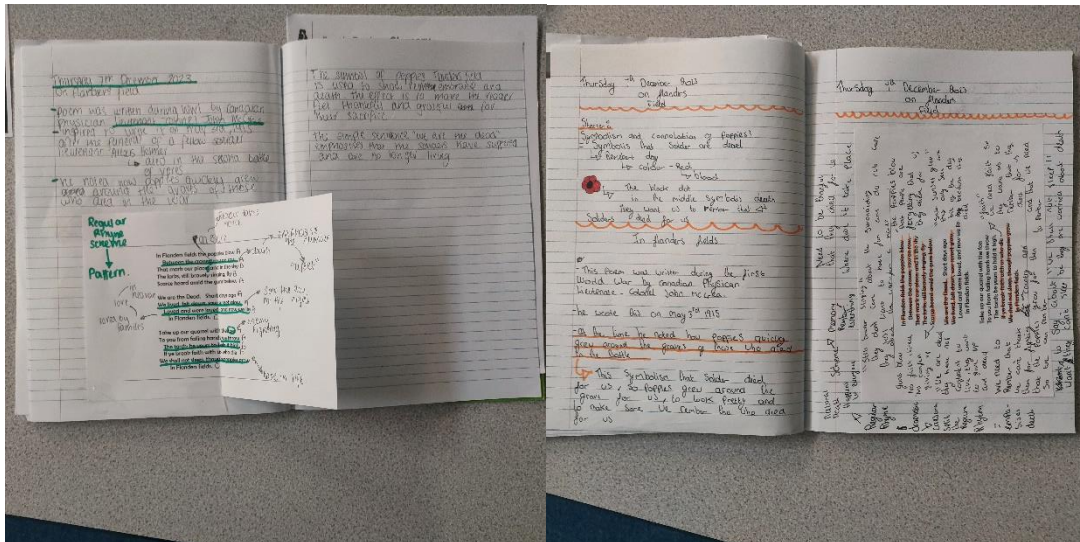
Sofia B

I come from pasta bakes and Sunday Roasts,  
Yorkshire puddings and crispy spuds,  
I come from a football loving family,  
I come from Villa Park and Wembley,  
I come from a group of funny friends  
I come from a marvellous mum and determined dad  
I come from Lydney Rugby Club  
Playing in the Morris Stand  
I come from a growing football team  
I come from a sassy sister  
I come from a family of Villa, West Ham  
and Liverpool fans - crazy when they play

Toby H

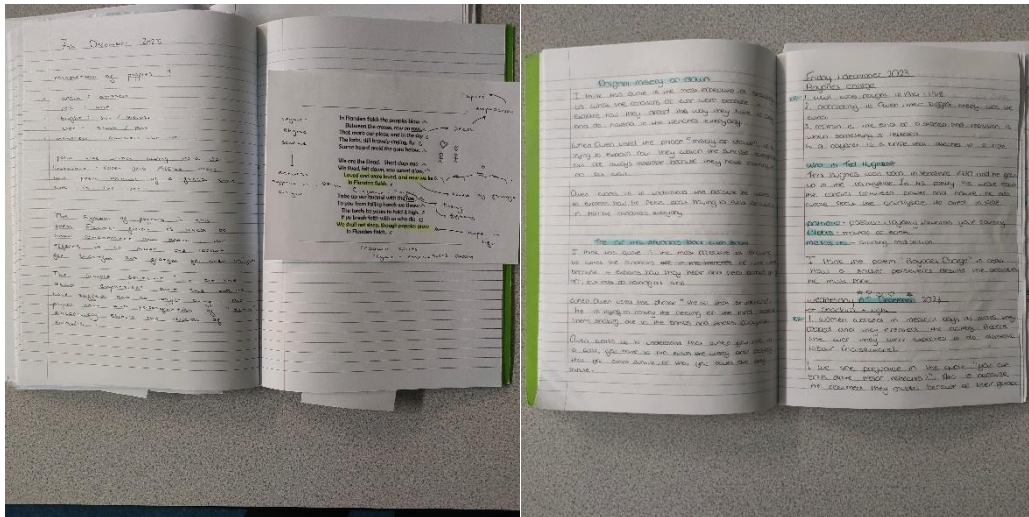


Year 9 English are learning about world war poetry in preparation to write a description of a soldier's experience of war.



Alisha R-J

Erin W



Fynley B

Phoebe A



## U13 DISTRICT NETBALL TOURNAMENT

On Wednesday night we hosted the U13 District Netball Tournament and came a fantastic 2<sup>nd</sup> place behind the winners Dene Magna.

The squad of Year 7 and 8 combined worked really, really hard and produced some brilliant results under not very nice conditions.

Two wins a draw and a loss overall!!! Great work by everyone.

Players of the Match: Maisie B and Millie G



Maisie B, Lexie B, Ivy E, Rosa F-H, Niamh W, Darcy T, Millie G Lilly-Sienna L-H



THE DEAN  
ACADEMY

Church Road, Lydney  
Gloucestershire, GL15 5DZ  
01594 843202  
info@thedeacademy.org

Richard Brand, Headteacher

## GLOUCESTERSHIRE COUNTY FOOTBALL

Year 10 student, Freya C, has been selected for the 3<sup>rd</sup> year running to represent The Dean Academy in Gloucestershire County Football. Freya, who also plays for Forest Green Rovers, is in this season's Under 16s County Schools League and they were in action last night with a win over Dorset. Freya managed to get on the score sheet too, helping the team to a 5-0 win! Well done, Freya!

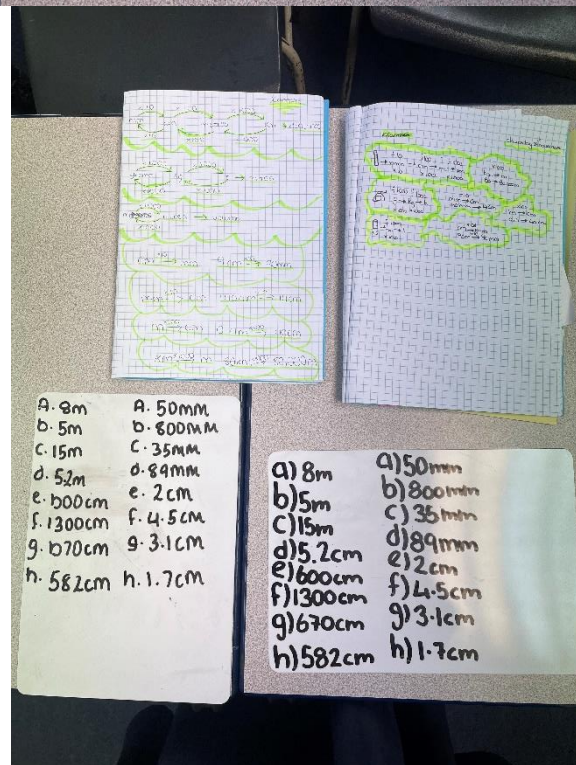
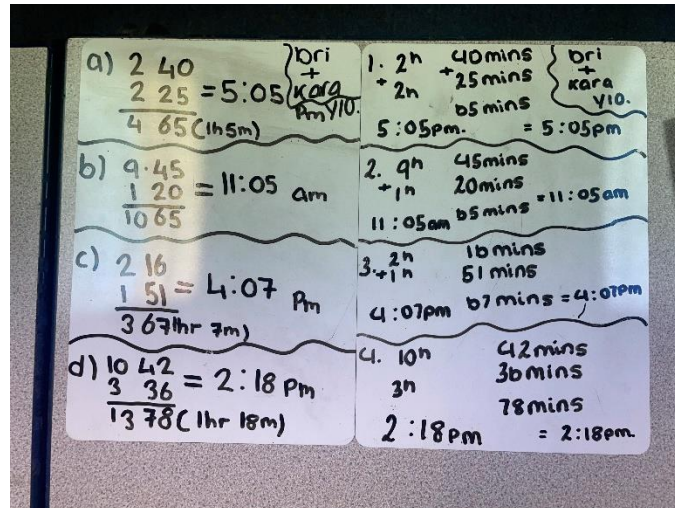




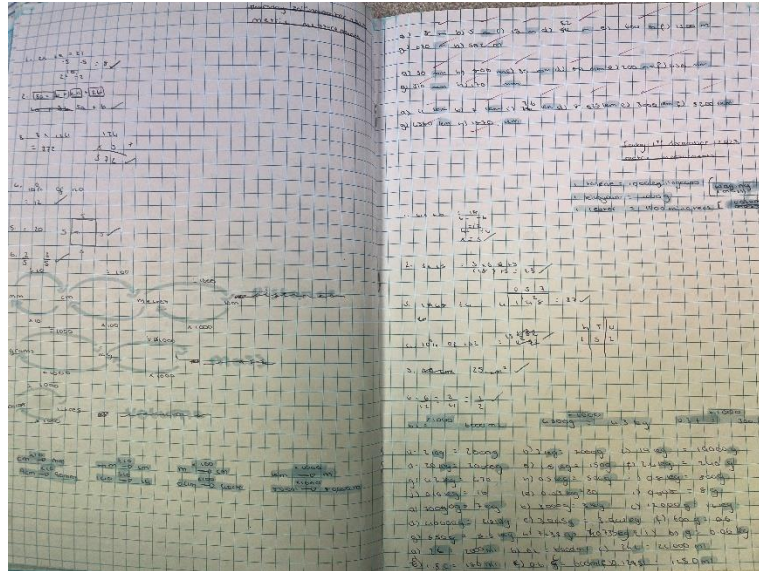


## MATHS

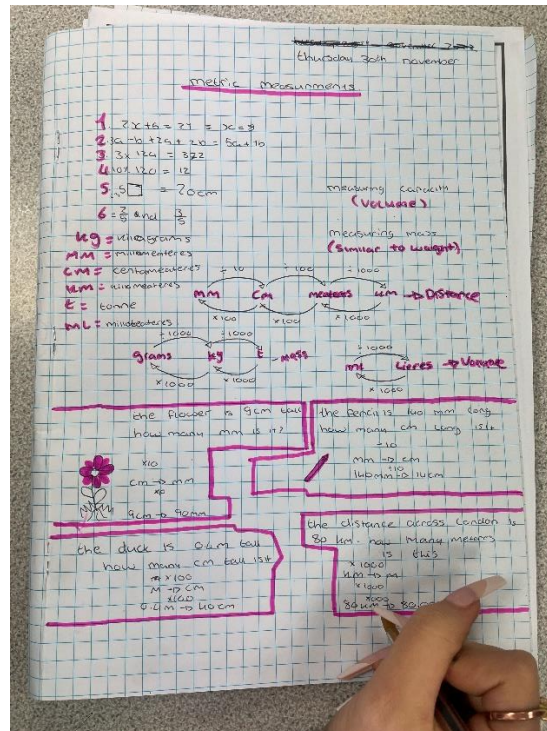
Some lovely examples of Year 10 and 11 work in Maths this week.



Kara S & Bri M



Lily M



Skye B



**TRIGONOMETRY**

**SOHCAHTOA**

opposite / hypotenuse = sine  
adjacent / hypotenuse = cosine  
opposite / adjacent = tangent

hypotenuse = longest side  
adjacent = next to one angle in question  
opposite = opposite one angle in question

**TRIGONOMETRY**

**FORMULAE**

$\sin \theta = \frac{\text{opposite}}{\text{hypotenuse}}$   
 $\cos \theta = \frac{\text{adjacent}}{\text{hypotenuse}}$   
 $\tan \theta = \frac{\text{opposite}}{\text{adjacent}}$

**AREA**

Rectangle: base x height  
Parallelogram: base x height  
Triangle:  $\frac{1}{2} \times \text{base} \times \text{height}$

**INDEX LAWS**

$a^m \times a^n = a^{m+n}$   
 $\frac{a^m}{a^n} = a^{m-n}$   
 $a^m = \sqrt[n]{a^m}$   
 $a^0 = 1$   
 $a^{\frac{1}{n}} = \sqrt[n]{a}$   
 $(a^m)^n = a^{m \times n}$

**EXAM QUESTIONS**

- $10^3 \times 10^4 = 10^7$
- $(10^2)^3 = 10^6$
- $289^{\frac{1}{2}} = 17$

Megan M

**Cube**:  $V = a^3$

**Cuboid**:  $V = L \times W \times h$

**Triangular prism**:  $V = \frac{1}{2} b h l$

**Cylinder**:  $V = \pi r^2 h$

**Sphere**:  $V = \frac{4}{3} \pi r^3$

**Rectangle**:  $A = bh$

**Triangle**:  $A = \frac{1}{2} bh$

**Parallelogram**:  $A = bh$

**Trapezium**:  $A = \frac{a+b}{2} h$

**Sphere**:  $A = 4\pi r^2$

**Sine**:  $\sin \alpha = \frac{\text{opposite}}{\text{hypotenuse}}$  SOH

**Cosine**:  $\cos \alpha = \frac{\text{adjacent}}{\text{hypotenuse}}$  CAH

**Tangent**:  $\tan \alpha = \frac{\text{opposite}}{\text{adjacent}}$  TOA

**Angles**:  $\theta = \sin^{-1}$

$\sin 30 = \frac{1}{2}$   
 $\cos 30 = \frac{\sqrt{3}}{2}$   
 $\tan 30 = \frac{1}{\sqrt{3}}$  or  $\frac{\sqrt{3}}{3}$   
 $\sin 60 = \frac{\sqrt{3}}{2}$   
 $\cos 60 = \frac{1}{2}$   
 $\tan 60 = \sqrt{3}$   
 $\tan 45 = 1$   
 $\sin 45 = \frac{1}{\sqrt{2}}$  or  $\frac{\sqrt{2}}{2}$   
 $\cos 45 = \frac{1}{\sqrt{2}}$  or  $\frac{\sqrt{2}}{2}$

Sawitta A



# GEOGRAPHY

Year 8 have been looking at factors affecting development.

Daisy C

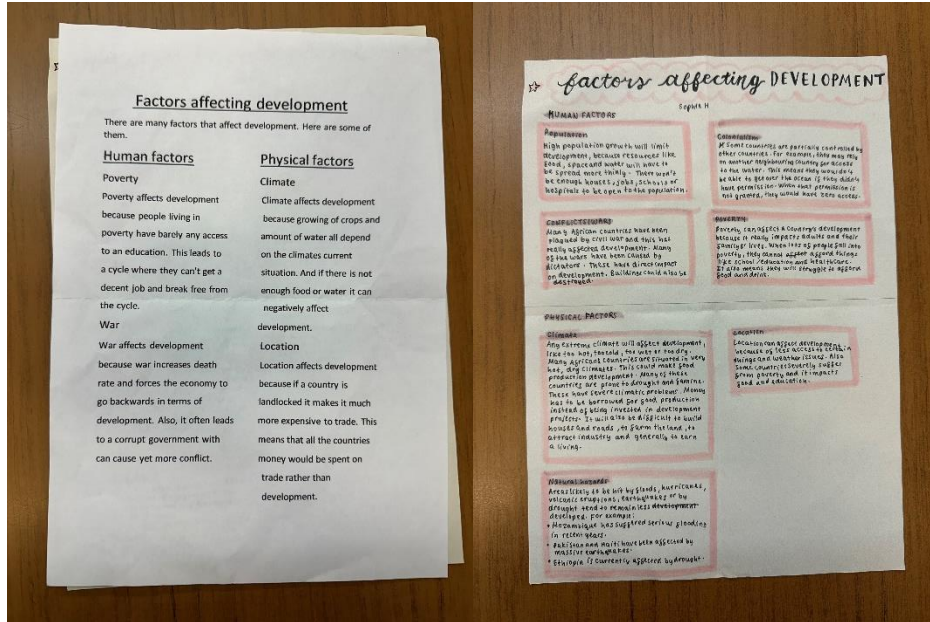
What are the human and physical factors affecting development?

Human Factors	Physical Factors
<p><b>Political Factors</b> - There are three main political factors which slow development.</p> <ol style="list-style-type: none"> <li>1. If a country has an unstable government, it might not invest in things like healthcare, education and improving the economy. This leads to slow development.</li> <li>2. Some governments are corrupt. This means that the politicians are breaking the law and not spending government funds to improve the country but rather are spending it on making themselves rich.</li> <li>3. If there's war the country loses money that could be spent on development as military equipment is expensive, buildings can get destroyed and fewer people work. War also directly reduces the quality of life for the population.</li> </ol>	<p><b>Climate</b> - If a country has a poor climate (really hot or really cold) it won't be able to grow much, which reduces the amount of food produced. People also have fewer crops to sell so less money to spend on goods and services. This also reduces their quality of life. The government gets less money from taxes, so there's less to spend on developing the country.</p>
<p><b>Economic Factors</b> - Trade links: trade is the exchange of goods and services between countries and is essential for the country to make money. If a country does not trade it will not earn money to spend on improving levels of development.</p> <p><b>Debt</b>: very poor countries borrow money from other countries and organisations, this money must be paid back (usually with interest). Any money a country makes is used to pay back the loan rather than help the country develop.</p> <p><b>Industry</b>: countries that mostly export primary products (raw materials, agricultural products) tend to be less developed as they don't make much profit. The prices also fluctuate and sometimes fall below the cost of production. This means people don't make much money and the government has less to spend on development. Countries that export manufactured goods tend to be more developed as profits are higher.</p>	<p><b>Agricultural Land</b> - if the land in a country is steep or has poor soil (or no soil) then they won't be able to produce a lot of food, and this affects development.</p>

Daisy C

<p><b>Social Factors:</b></p> <p><b>Drinking water:</b> a country will be more developed if clean drinking water is available. This is because if people drink dirty water, they will catch diseases such as typhoid and cholera. Being ill reduces people's quality of life but also means they can't work so they don't pay tax and the government has less money to invest in development. If access to safe water is low people have to sometimes walk to fetch water. This tends to be women and girls. If they are fetching water, it means that the girls are not in school, and the women are not working which also has knock-on effects on development.</p> <p><b>Place of women in society:</b> a country will be more developed if women have an equal place with men in society. These women tend to be better educated and are more likely to work. This gives them a better quality of life and the country has more money to spend on development as more people are contributing to the economy.</p> <p><b>Education:</b> the more children who are educated the more developed a country will be. This is because they'll be higher skilled and able to get better, higher paid jobs later in life. Having a good job improves people's quality of life and increases the money the country has to spend on development.</p>	<p><b>Water Supplies</b> - some countries don't have a lot of water, and this makes it harder for them to produce a lot of food.</p> <p><b>Raw Materials</b> - countries without many raw materials (e.g. coal, oil) tend to make less money because they have fewer products to sell. This means they have less money to spend on development.</p> <p><b>Natural Hazards</b> - countries which experience a lot of natural disasters (natural event which affects people's lives or property) must spend a lot of money rebuilding after disasters occur. They reduce people's quality of life, and they reduce the amount of money the government has to spend on development projects e.g. Haiti earthquakes.</p>
--	--

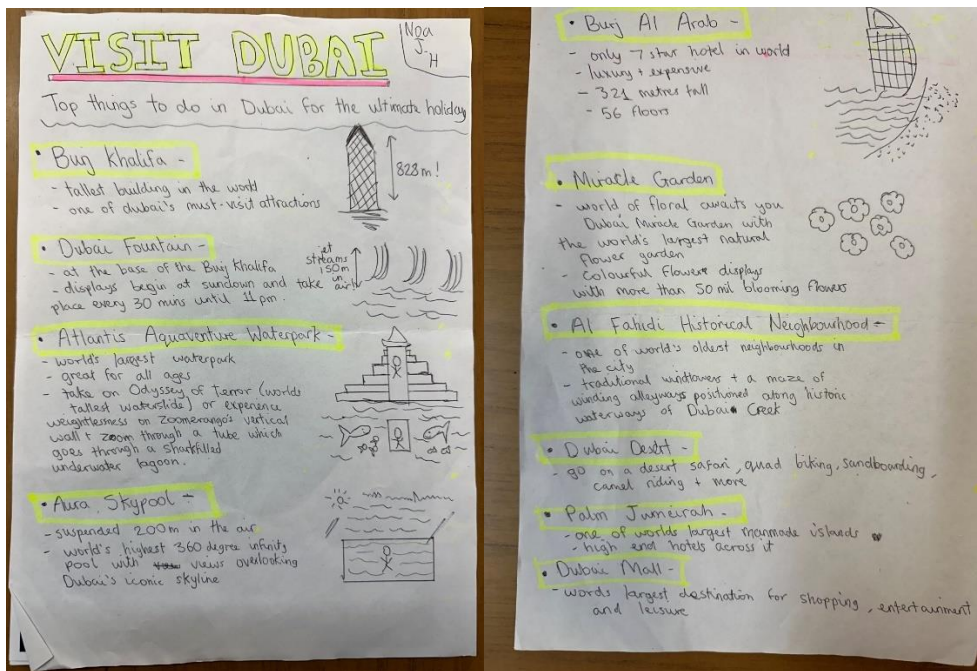
Daisy C



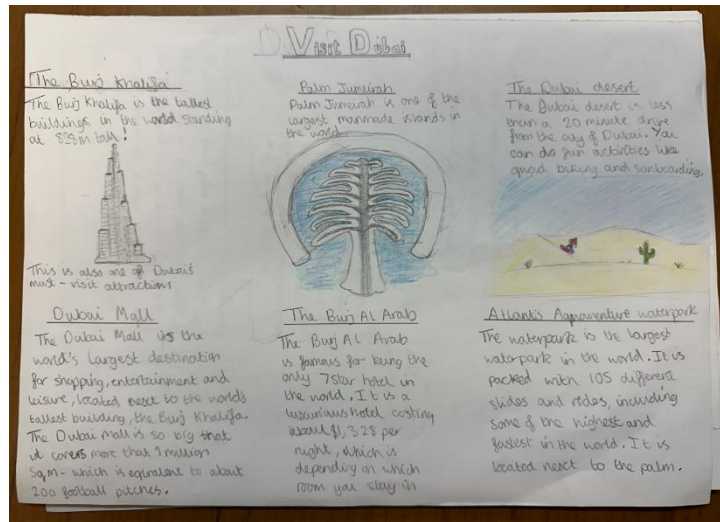
Rosa F H

Sophie H

Year 9 have been looking at Dubai this week.



Noa J-H



Tallulah M

## TEXTILES

Ms Muirhead's Textiles Club have been making Christmas tree decorations.





THE DEAN  
ACADEMY

Church Road, Lydney  
Gloucestershire, GL15 5DZ  
01594 843202  
info@thedeacademy.org

Richard Brand, Headteacher

## PRODUCT DESIGN

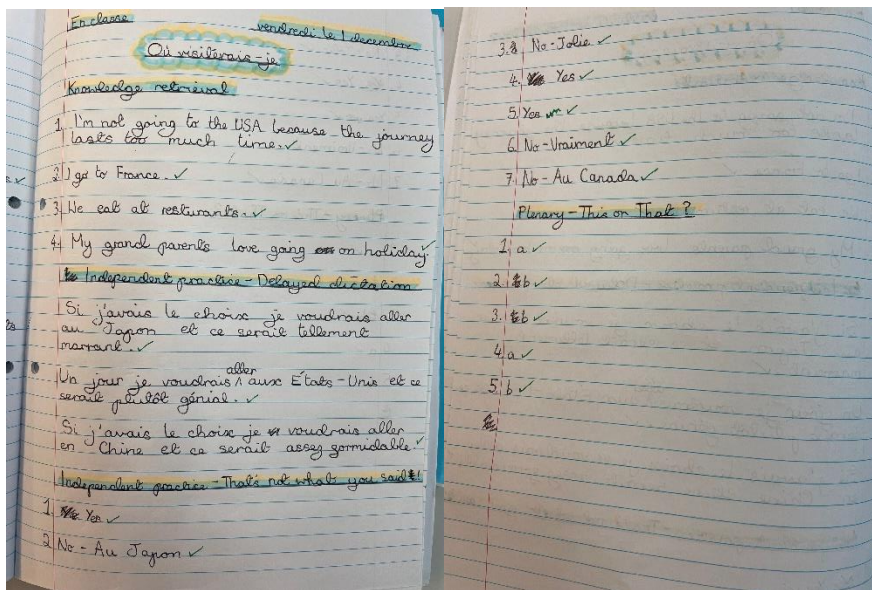
Year 10 Product Design have been making small products for a Christmas Fair. They have been learning about batch production, lay planning and quality control.



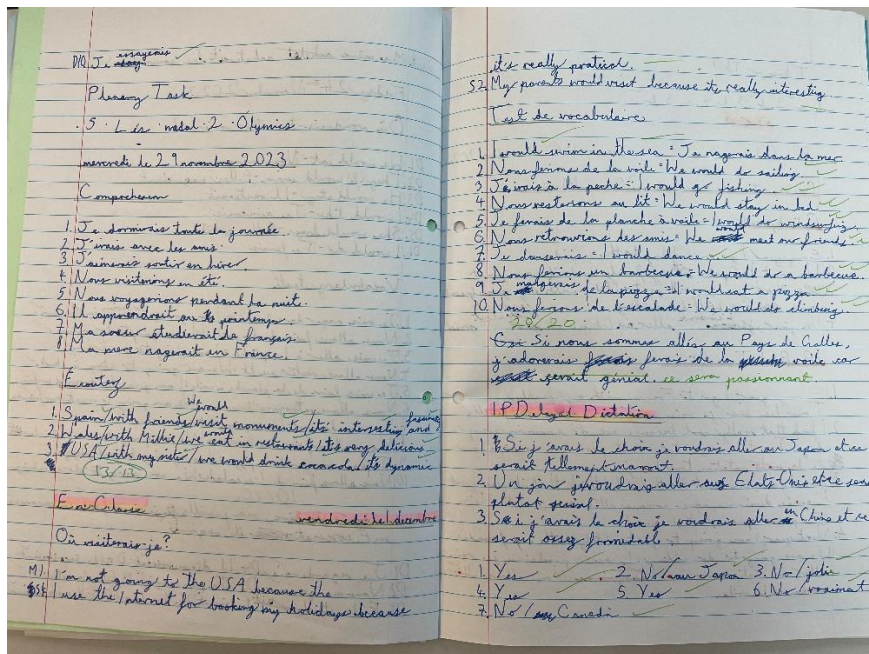


## MFL

We have been really impressed with our wonderful students and their determination as they prepare for their MFL Writing Assessments. Here are some stunning examples of work from Isla and Rosa in Year 8! Bravo y excelente! We are really excited to read all of your amazing work!



Rosa



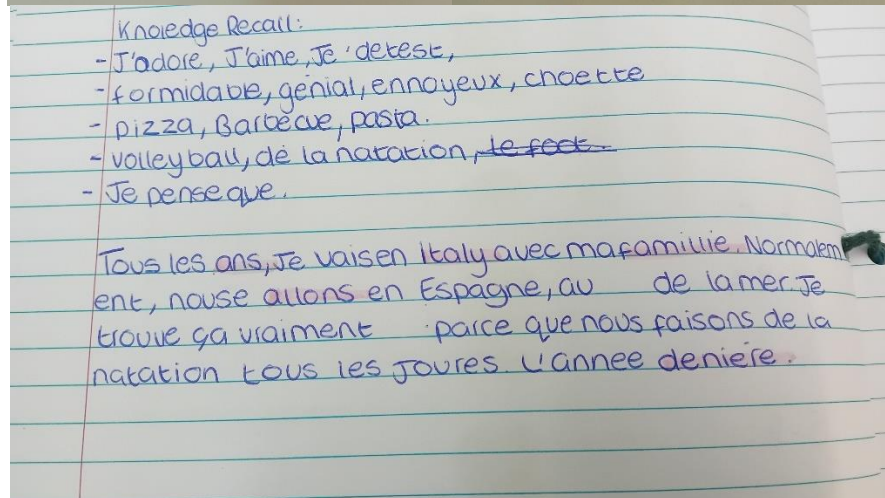
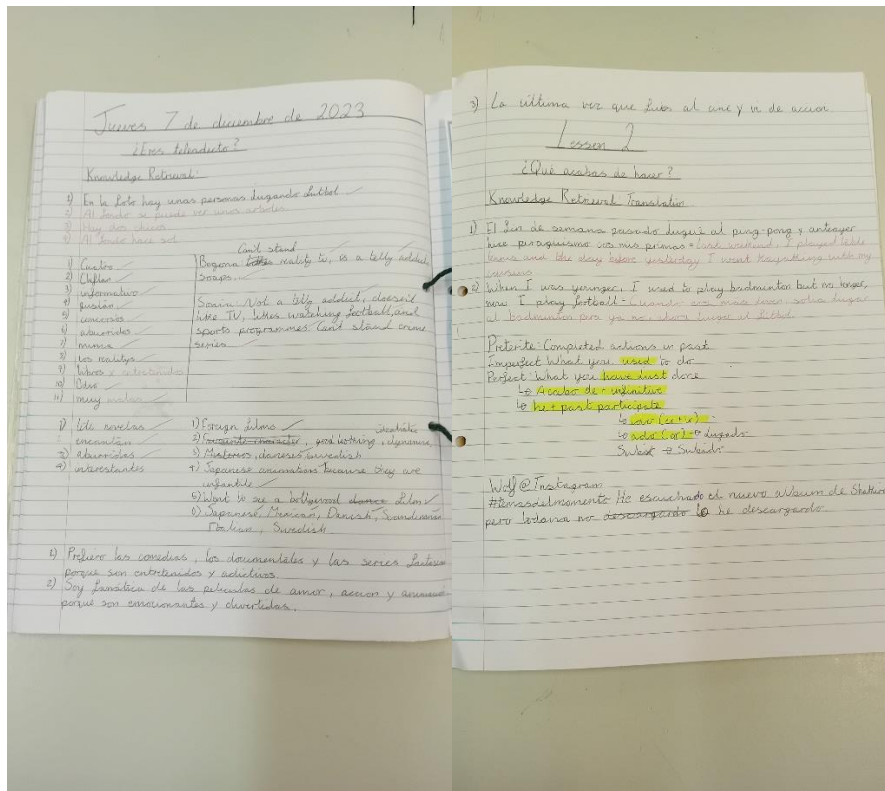
Isla



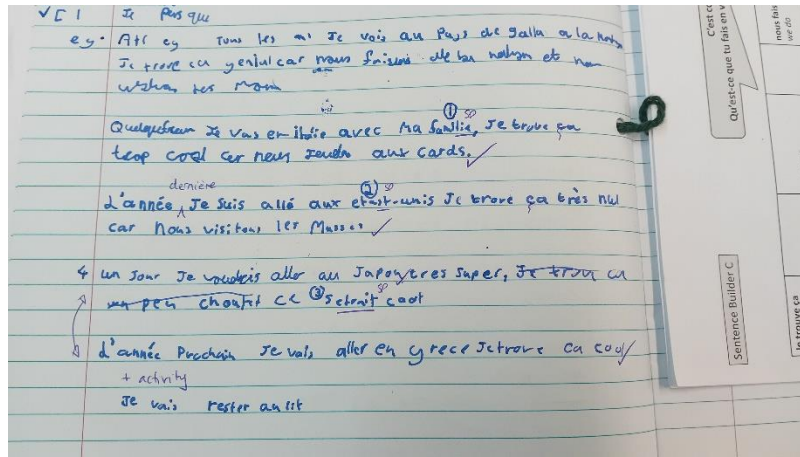


Year 10 Spanish students working on talking about their favourite programmes and what they have recently done.

Year 8 French students doing some excellent preparation for a writing assessment.







## CHRISTMAS LUNCHES

Year 7s enjoying their Christmas Lunch on Tuesday/Wednesday.



Jayden P & Alfie M



Wilf W & Toby H



Eden-Mae H



Austin W



THE DEAN  
ACADEMY

Church Road, Lydney  
Gloucestershire, GL15 5DZ  
01594 843202  
info@thedeacademy.org

Richard Brand, Headteacher



C Johnson



Lydia JB

Alfie W



Jasmine K



Lily Ann R & Erin W



Year 8s enjoying their Christmas Lunch on Thursday.



Amber S, Ava S & Summer J

Willow NL & Millie R



Afie RP & Leo LH

Emily H



## PRIMARY TRANSITION

Year 5 pupils from Blakeney Primary School joined Miss Hinchey in the Art rooms on Tuesday to experience an Art lesson at The Dean Academy. They demonstrated some excellent colour blending skills in their drawings of bugs! We hope you enjoyed the session!





## BOOK FAIR

A massive thank you to our amazing students and the generosity of their parents during our recent book fair. It was so popular and successful that Mrs Williams in the school library has now received some fantastic new books, free of charge, which will go on the shelves for all of our students to enjoy!

