



Enjoyment

Achievement

Community

THE DEAN ACADEMY

WEEKLY PARENTS' BULLETIN NO 8

WEEK COMMENCING 2nd NOVEMBER 2020

WEEK A

Monday 2nd November

Tuesday 3rd November

Wednesday 4th November

Thursday 5th November

Friday 6th November

Firstly, thank you to all of our students, staff and families for their remarkable commitment and resilience this term.

It has been a very different term to any I can remember, and probably will ever see again, but the positive, good-humoured way our staff, students and parents have supported us to get through this period has been tremendous.

Alongside reopening to all students in a COVID-safe way we have made great strides in driving up standards of behaviour, conduct, and uniform. Further, exam groups have balanced getting to grips with new systems and shifting policy around assessments whilst approaching their studies in a determined and focused way.

I want to say a particular thank you to all of our staff – we are very fortunate to have such dedicated, selfless and skilled colleagues serving our community.

Please be reminded that tomorrow is an INSET day, and we will reopen to students on Monday 2nd November.

I hope you all have a good well-earned rest over half term when it arrives.

Richard Brand
Headteacher

Enjoyment Achievement Community

Congratulations to the following weekly winners of our attendance raffle for week ending 16th October 2020:-

KS3 – Ryan H, 7DW

KS4 – Scarlett S, 10NL

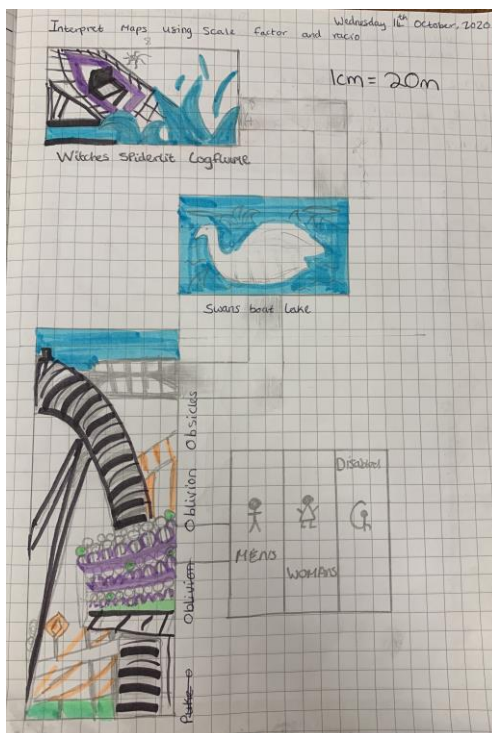
Congratulations to 7AM on 100% attendance.

MESSAGE FROM THE MATHS FACULTY

Please note that Year 7 students will be put into sets in Maths during the week after half term.

Miss Weaver

BRIGHT SPOTS



Good work by a student in my class (who wishes to remain anonymous) doing scaling and they designed their own scaled down theme park. **Mr Fessey**

SHOCK ATTACK

4 'Streak' attacked a woman!
The Wolf Man is a wolf but is a man at the same time. The Wolf Man went crazy and dragged the woman and bit her hand off. Her husband was furious and reported it to us!

Breaking News: Woman attacked by a wolf man and cured in a peculiar way.

This all took place at a haunted theatre. The theatre was closed after a boy sawing off the balcony. It is said that streak shows are illegal now so the crew of 'Streaks' are breaking the law. Police have been set off to find the culprits of this incident but no one has been solved.

It happened on Saturday evening at around midnight no one was had any impact with the woman.

The only people we know that are involved in it are the Wolf man and Mr Tall (the owner of the show). Apparently, he round her hand and, people passed in wide-brimmed robes came. Mr Tall sprinkled on magic dust to the woman's arm (where her hand was missing) and the people in blue stitched her.

People at the show said:
The wolf man was aggressive to me because he was angry.
A loud noise broke my heart the night.
They have the rest of the crew like Tom; they are angry but secret but now also take story, it's on the news.

Mr Tall is Magic!

People at the show said:
The wolf man was aggressive to me because he was angry.
A loud noise broke my heart the night.

Lydney Express

Wednesday 14th October 2020 50p

Shock attack at Freak show

On Saturday evening during a Cirque du Freak show in town a woman had her bitten off by a Wolf man.
Her husband recalls that they were sat watching the show and there was 2 ladies who possessed a Wolf man. The ladies asked the audience to be quiet but someone in the crowd made a noise which angered the wolf man.

Next a man called Mr Tall (the Boss of the show) and two hooded men approached her and sprinkled a blue type powder onto her arm and her hand then grew back! As you can imagine I was totally confused.

An eye witness who was sat behind the couple said it was absolute madness, a crazy possessed Wolf man bit off the poor ladies hand right in front of me. There was blood everywhere and she was screaming. It was like a horror movie. I watched as 3 men came up to her and sprinkled something onto her arm and poof like that her hand was back. It was total madness.

The Wolf man then came up to my wife and bit off her hand! My wife was screaming and blood was shooting out of her arm and over everyone. I was really worried.

WOLF MAN WHO ATTACKED THE WOMEN.

CIRQUE DU FREAK

By Cole M. Kara T.

Ace Reports Award!
+ POINT
+ POINT

Cole M and Kara T in Year 7 for being Ace News Reporters and producing outstanding work in English last week. **Ms Paton**

Geography

Year 7 have been building models to show contour lines and how the height of the land changes.

Bailey W in Year 7 creating different models to show contour lines out of Lego



Layla in Year 7 baked and decorated a cake to show contour lines.



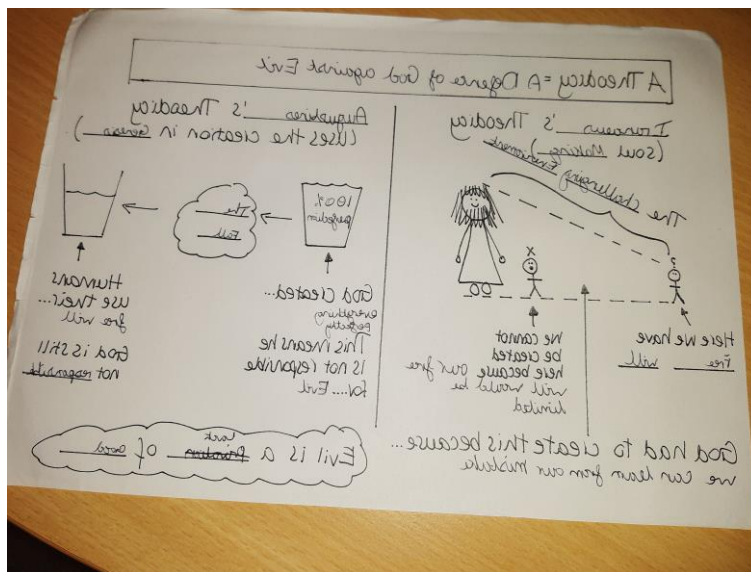
Odin in Year 7 turned a cake into a mountain, using different colours to show the height of the land.



Leo in Year 7 – Clay model of a volcano after studying Mount St Helens.



Well done to everyone – Miss Longman.



Adam in Year 10

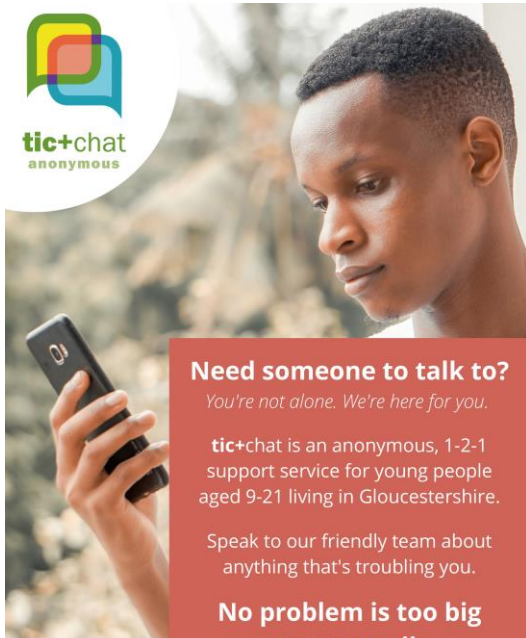
RECAP: Gimme 3, 2, 1

<p>Three omni qualities and definitions:</p> <ul style="list-style-type: none"> • Omniscient → all seeing/all knowing • Omnipotent → all - powerful • Omnibenevolent → all-loving • Omnipresent → God is everywhere. 	<p>Complete this diagram:</p> <div style="text-align: center;"> </div>	<p>Three things that happened to Job:</p> <ul style="list-style-type: none"> • His family was taken away • His cows & sheep were taken away • His children were taken away
<p>Two ways the problem of evil challenges the nature of God:</p> <ol style="list-style-type: none"> 1) God is omnipotent but he's not omnibenevolent. or 2) God is omnibenevolent but he's not omnipotent. 	<p>Two definitions:</p> <p>TRANSCENDENT: God is beyond humanly following.</p> <p>IMMANENT: God is within us.</p>	
<p>One way that Christians believe the existence of Free Will acts as a defence for God letting people suffer:</p> <p>God gave us free will so we can do things that we can do better things.</p>		

Great examples of knowledge recall tasks from Year 10 RPE students as we study possible answers to the question "Can God and Evil coexist?" **Mrs Smith**

PE CLUBS IN THE SPORTS HALL

Week A		Week B
Year 11 1:30pm - 2:10pm	Monday	Year 11 1:30pm - 2:10pm
Year 7 12:25pm - 1:05pm	Tuesday	Year 8 1:30pm - 2:10pm
Year 8 1:30pm - 2:10pm	Wednesday	Year 8 1:30pm - 2:10pm
Year 8 1:30pm - 2:10pm	Thursday	Year 9 1:00pm - 1:40pm
Year 10 12:25pm - 1:05pm	Friday	Year 11 1:30pm - 2:10pm



Need someone to talk to?
You're not alone. We're here for you.

tic+chat is an anonymous, 1-2-1 support service for young people aged 9-21 living in Gloucestershire.

Speak to our friendly team about anything that's troubling you.

No problem is too big or too small.

We care. We won't judge.

No appointment is needed.
There are 2 ways to get in touch:



call
0300 303 8080

chat with one of our team members over the phone*

live message
chat online via ticplus.org.uk



Open hours:
Sunday-Thursday
5pm-9pm

Find out more at
www.ticplus.org.uk

*standard provider rates apply



Charity No.
1045429
Company No.
2954230

PARENT SUPPORT & ADVICE LINE

Are you worried about your child's mental health, emotional wellbeing or behaviour?

Parenting can be hugely rewarding but it can also be really hard work, especially if you think your child is unhappy or you are worried about them.

FREE - CONFIDENTIAL - ANONYMOUS



TIC+ cares – we're here to help!

If your child is 0-25 years old and lives in Gloucestershire, drop-in to our free, anonymous, confidential helpline during open times and talk to one of our trained parent support advisors.

YOU ARE NOT ALONE



PARENT SUPPORT LINE
0800 6525675



PARENT SUPPORT WEB CHAT
www.ticplus.org.uk/parents-carers

The TIC+ parent support advisors can help, they care, won't judge, and will take you seriously.

If your child lives in Gloucestershire and is between the ages of 0 and 25 and you would like support please get in touch.

To make it easier to reach out for help we offer a choice of ways to contact us:



Parent Support Line: You can call our Freephone number from your mobile or home phone.



Parent Support Web Chat: We recognise that sometimes it's difficult talking when things aren't going so well. Providing you've got access to the internet, web-chat allows you to live message a member of our team.

Whichever option you choose, there is no need to make an appointment, drop-in anytime during our open hours:

OPEN TIMES:

Monday & Wednesday: 5pm - 9pm
Tuesday & Saturday: 9.30am - 1pm

Open times may be subject to change - check our website for up to date information

www.ticplus.org.uk



TIC+ is a mental health charity founded in 1993. Our mission is to improve, preserve and promote, good mental health and wellbeing among children, young people and families.

Charity number 1045429

SCHOOL BUS INFORMATION

Students should carry their bus passes at all times and the passes are valid for the whole year. If a pass is lost or damaged a replacement pass will cost £5.00 obtainable from Shire Hall, Gloucester only.

If you need to obtain a replacement bus pass for your child please visit:

www.gloucestershire.gov.uk/applyforabuspass to pay for your pass online. Replacement passes can no longer be ordered and paid for by telephone.

If you need to enquire about the spare seat scheme please visit:

www.gloucestershire.gov.uk/spareseat

If you are enquiring about your existing spare seat application and you have received an email receipt from Shire Hall, this means applications are currently being processed and you will be contacted by email in due course with the outcome.

Alternatively, you may be able to find the information you require by visiting the Gloucestershire County Council website: www.gloucestershire.gov.uk/education where council information and services can be accessed 24 hours a day.

If a student misses a bus or is refused travel home because they do not have their bus pass, they should come back into the school so that parents can be contacted, or arrangements can be made to get them home.

If a student forgets their bus pass, they should see Theresa Whatley, Head's PA before 12.30 p.m. on the day who will contact Shire Hall to gain permission for the student to travel home that day otherwise, they may be refused travel home.

UNIFORM

A reminder for parents that our school uniform and PE kit are compulsory for all students. Please see the school website for full details of the school uniform and PE kit.

www.thedeanacademy.org

Our uniform suppliers are:- Monkhouse Schoolwear, 99 Northgate Street, Gloucester, GL1 2AA, Tel No: 01452 413339, <http://www.monkhouse.com>

PE Kit is available from: Macron Store, Unit 9, Bamel Way, Gloucester Business Park, Brockworth, Gloucester, GL3 4BH Tel No: 01452 386400, www.macronstoregloucester.com

FREE SCHOOL MEALS

Apply online for Free School Meals. Check to see if you are eligible.

www.gloucestershire.gov.uk/freeschoolmeals